

# Opera XR

The advanced GPR solution for an easy on site utility detection



EsT - Premium technology for every user.  
(Inspection Range 80 MHz - 1500 MHz)



Lightweight and compact solution for  
effortless and comfortable data collection



Quick Scan Mode to streamline field  
operations: saving time and reducing costs



On-site marking and digitalization



Reporting directly in the field, streamlining  
workflows and accelerating job closure

## SEE MORE. **REACH DEEPER.** BASED ON "EST" TECHNOLOGY GPR

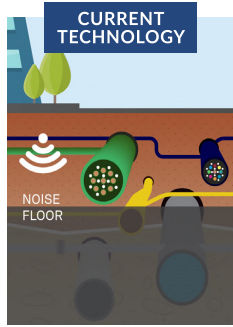
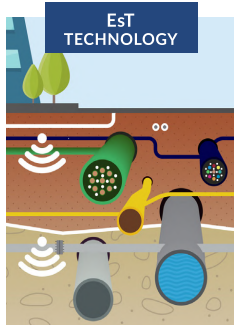
OPERA XR IS THE LATEST 2025 UTILITY GPR, PROVIDING POSSIBLY  
**THE HIGHEST DEPTH PENETRATION AND RESOLUTION, IN ITS CLASS**  
BASED ON DUAL FREQUENCY 200/900 MHz ANTENNA & EST TECHNOLOGY.

# Opera XR

The advanced GPR solution for an easy on site utility detection



Opera XR is a compact, easy to transport and deploy ground penetrating radar for fast and accurate Underground non metallic & metallic buried utility on site asset detection; featuring the new radical Equalized scrambled Technology- EsT by IDS GeoRadar, Opera XR takes underground utility detection to the next level : deeper and clearer, than any other product on the market.



## EsT | Equalized scrambled Technology: a new depth in utility detection.

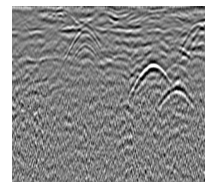
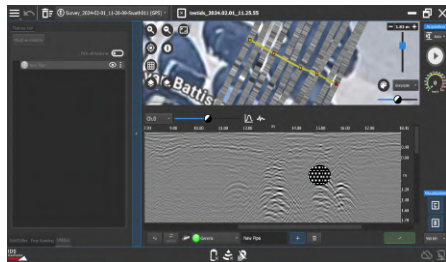
Thanks to patented EsT technology, Opera XR delivers an unparalleled detecting performance providing the best data quality and increasing penetration depth by 40% to 60% compared to traditional devices.

This technology is able to exploit the entire radiating performance of the antenna for full control of the GPR signal, Opera XR provides users with an accurate detection of underground utilities and optimal data quality with the noise rejection for their peace of mind.

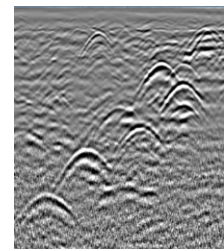
### Quick Scan



### On Site V Map Software



Traditional GPR depth penetration

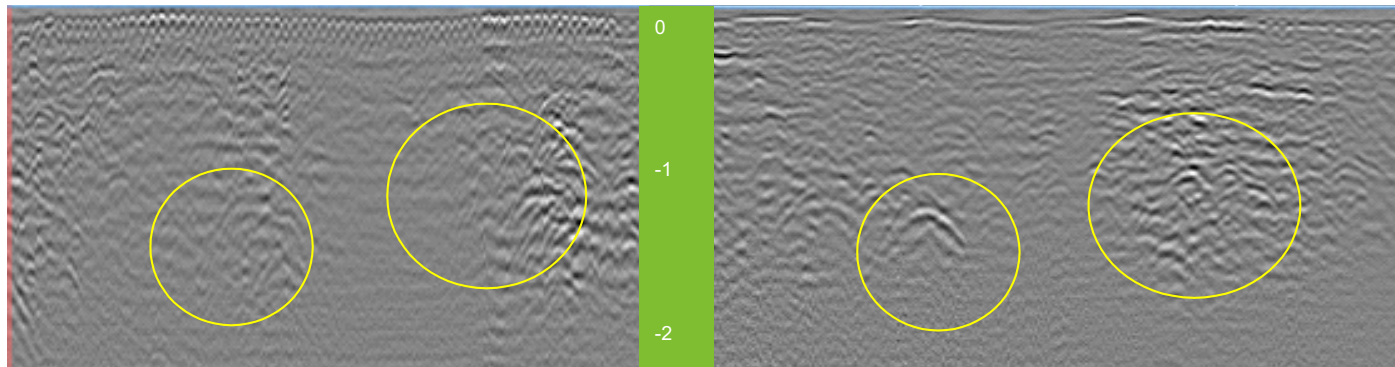


Opera XR depth penetration



Go Deeper

### See More



HH Config

VV Config



**DESIGNED FOR FLEXIBILITY:**  
COMPACT, LIGHT AND CUSTOMISABLE



**PREMIUM ON-SITE PERFORMANCE**  
SEE MORE, BETTER AND DEEPER



**GREATER EFFICIENCY FOR**  
ON SITE TARGET MANAGEMENT AND REPORTING

Opera XR allows effortless data collection with its lightweight 20 kg, modular and compact design. The dual-frequency antenna mounting system is height-adjustable and offers an easy polarization switch (HH and VV) Handlebar is foldable for easy deployment and the device can be easily maneuvered and transported by a single operator.

Opera XR boasts unmatched resolution and extraordinary depth investigation detecting hidden utilities more clearly at both shallow and deeper levels. The "Quick Scan" mode helps streamline field operations with an intuitive and easy detection of the underground pipe network: from real time making and digitalization of detected anomalies to quick on-site reporting.

Once connected to the tablet, uMap Logger automatically configures the Opera XR. The user simply connects the LAN cable, launches the software, and can immediately begin data collection - no additional steps required. Quick Scan Mode optimizes field operations, saving time and reducing costs.

# Opera XR

The advanced GPR solution for an easy on site utility detection

## System Specifications

- Double Channel
- Inspection Range: 80MHz - 1500 Mhz
- Total Weight: 20 kg (44 lbs)
- Positioning: Encoder; external GPS and TPS
- Operating Temperature: -20°C to +50°C
- Certification CE, UKCA, FCC, IC
- Environmental: IP65 Water & Dust Proof

## NON-STOP PERFORMANCE

- Battery life (1 battery > 4h; 2 batteries > 8h)
- Hot swap technology for power supply

## EST TECHNOLOGY

- Extended depth range and high resolution
- unparalleled control of the GPR signal
- Patented technology

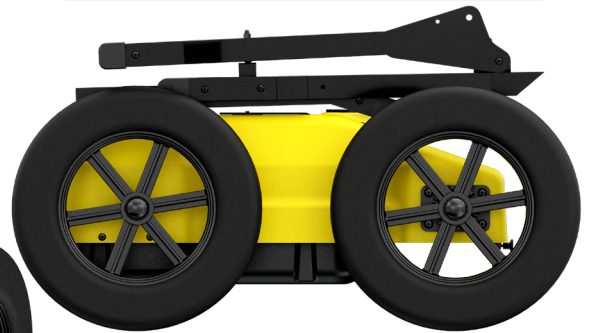
## OPTIONAL ACCESSORIES

- External positioning support
- Rugged off-road wheels
- Hard shipping box



## CONFIGURATIONS

- Asphalt -> pivoting wheels
- Rugged -> terrain wheels (OPTIONAL)



B.



A.

Designed for easy handling by single user:

A. Open configuration for usage: 750x625x1000 mm (30x25x40 in)

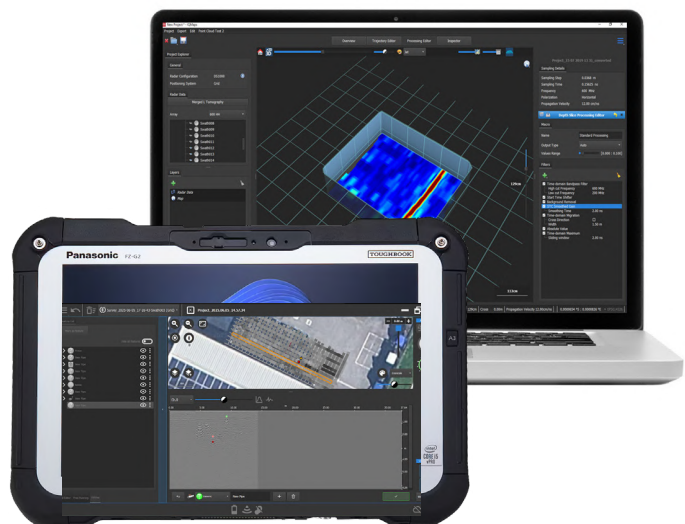
B. Folded configuration for easy transportation and storage: 750x625x420 mm (30x25x17 in)

## No- limit to data collection and easy management.

Opera XR employs the latest software technology solutions for data collection and post processing: **uMap** and **IQMaps**.

The on-field software **uMap**, allows for faster collection and improved management of data with an easy-to-use interface that even unskilled users can comfortably manage.

**IQMaps** (Optional) is IDS GeoRadar's post-processing software application for the advanced analysis of GPR data, enabling fast interfacing between the user and GPR data itself.



# Opera XR

The advanced GPR solution for an easy on site utility detection



## Technical Specifications:

Features	Specifications
<b>No of channels</b>	2
<b>Central Frequencies</b>	Dual 200 Mhz and 900 Mhz
<b>Inspection Range</b>	80 MHz-1500 Mhz
<b>Technology</b>	EsT-Equalized scrambled technolgy (Patented technology)
<b>Dimension (Folded for Transport)</b>	750x625x420 mm   30x25x17 in
<b>Dimensions (in use)</b>	750x625x1000 mm   30x25x40 in
<b>Weight</b>	20kg   44 lbs
<b>Operating Temprature</b>	-20° C to +50° C   -4° F to 122° F   IEC 60068 2-1/2
<b>Vibration</b>	Complaint with IEC 60068-2-64:2012
<b>Shock</b>	Complaint with IEC 60068-2-31:2011
<b>Certification</b>	CE,UKCA,FCC,IC
<b>Polarization</b>	Configuration : HH and VV
<b>Positioning</b>	Encoder, external GPS and TPS
<b>Power Consumption</b>	Acquistion: 16W   Stand-by: 12W
<b>Operating Time</b>	4 h with #1 battery   8 h with #2 battery Operating time can be extended by hot swap capability
<b>Wheels</b>	4xØ310 mm (default)   4xØ380 mm (optional) 4xØ12 in (default)   4xØ15 in (optional)
<b>Environmental</b>	IP65
Software Specifications	
<b>uMap Data collection software (Included)</b>	Automatic calibration for an easy and quick start-up Visualization and storage of radar data Real-time visualization of radar tomography (time slices) Import of cartography of the surveyed area from different sources for visualising geo-referenced underground asset position in real time. Connection with NMEA positioning device Multilanguage support Metric and Imperial units Export, store, share and access data on major cloud service providers for a streamlined workflow in utility detection on site target marking automatic report generation
<b>IQMaps Processing Software (Optional)</b>	Advanced 3D processing software with a direct export link to AutoCAD export, store, share and access data on major cloud service providers for a streamlined workflow in utility detection
<b>Recommended Tablet (Ruggedized PC)</b>	Panasonic FZ-G2/GETAC S410